



Excellence Since 1953



ELECTRONICS

Why Winters

1. Large and deep product offering

Allows access to many new and different customers

2. High quality products

Worry-free installations with an extremely low defect rate of **0.17%**

3. Five year warranty

Covering all instrumentation

4. Servicing all market segments

Covering both the industrial and commercial markets

5. High field support presence

A large number of Regional Sales Managers providing global coverage

6. Distributed globally

Global distribution in over 90 countries through 8 Winters sales and service offices

7. Distributor training events

Ensuring our partners are fully equipped to promote, sell and support our

8. Engineering team

Responding to technical RFQs and providing application know-how

9. Regular 3rd party factory audits

Customers and agencies verifying standards and certifications

10. Approvals

Adhering to higher standards: 3A, RoHS, CE, CRN, CSA, FM, ISO 9001, UL

11. Distributor portal

All of our Winters tools at your convenience

12. Global AMLs

Easier acceptance into industrial and commercial projects

13. StabiliZR™

Gauge dampening technology without glycerin filling

14. Strong R&D

Numerous new product launches

15. Platinum service

Front of the line service

16. UPC labelled product and packaging

Fast and simple product identification

17. Comprehensive website and App

Embracing mobile technology

18. Canada's Best Managed Companies Program Winner Since 2017

Recognition for innovation and sustained performance re-enforces Winters' commitment to continuous improvement



WPS Commercial Differential Pressure Switch

Excellent solution in BAS and HVAC applications requiring monitoring and control

Housing	Grey colour Polyamide 6.6 plastic
Wetted Parts	Silicone based diaphragm, tempered at 392oF (200oC)
Range	0.08 to 16 "H ₂ O
No. of Contacts	Single-pole double-throw (SPDT)
Accuracy	+/- 15% of upper and lower pressure ratings



1WPS Compact OEM Pressure Switch

All stainless steel pressure switch for all industrial and commercial applications requiring compact sizing and high-pressure ratings, with built-in restrictor screw.

Housing	Stainless steel
Wetted Parts	Stainless steel, including NBR
Range	3 to 5,000 psi
Accuracy	2% of scale



2WPS General Purpose Pressure Switch

General purpose, watertight pressure switch with high-current ratings and available in both fixed and adjustable deadband options. IP66 rated.

Housing	Die-cast aluminium
Wetted Parts	316 stainless steel welded
Range	10 to 4,000 psi
Accuracy	+/- 1% of the adjustable set-point range



3WPS Vacuum and Low-Pressure Purpose Switch

Vacuum and low-pressure switch for general purpose watertight installations available with either 1x SPDT or 2x SPDT contacts. IP66 rated.

Housing Material	Die-cast aluminium
Wetted Parts	316 stainless steel welded
Range	Vacuum to 10 psi
Accuracy	+/-1% of adjustable set-point range



4WPS Mid-Range General Purpose Pressure Switch

General purpose, watertight pressure switch with high-current ratings and available in both fixed and adjustable dead-band options. IP66 rated.

Housing Material	Die-cast aluminium
Wetted Parts	316 stainless steel welded
Range	2 to 100 psi
Accuracy	+/-1% of adjustable set-point range



5WPS Differential Pressure Switch

General purpose, watertight differential pressure switch with high-current ratings and fixed deadband. IP66 rated.

Housing Material	Die-cast aluminium
Wetted Parts	316 stainless steel welded, including titanium material
Range	15" H ₂ O to 500 psi differential
Accuracy	+/-1% of adjustable set-point range



6WPS Explosion Proof Pressure Switch

Explosion proof, watertight pressure switch with high-current ratings and available in both fixed and adjustable dead-band options. IP68 rated.

Housing	Die-cast aluminum
Wetted Parts	316 stainless steel welded
Range	10 to 4,000 psi
Accuracy	+/-1% of the adjustable set-point range



7WPS Mid-Range Explosion Proof Pressure Switch

Explosion proof, watertight pressure switch with high-current ratings and available in both fixed and adjustable dead-band options. IP68 rated.

Housing	Die-cast aluminum
Wetted Parts	316 stainless steel welded
Range	2 to 100 psi
Accuracy	+/- 1% of the adjustment set-point range



8WPS Low Pressure Diaphragm Pressure Switch

Vacuum and low-pressure switch for hazardous areas available with either 1x SPDT or 2x SPDT contacts. IP68 rated.

Housing	Die-cast aluminum
Wetted Parts	316 stainless steel welded
Range	Vacuum to 10 psi
Accuracy	+/-1% of the adjustable set-point range



9WPS Compact Explosion Proof Pressure Switch

High-powered, compact explosion proof switch with easy thumb-wheel adjustable set-point. NEMA 4X rated.

Housing Material	Stainless steel
Wetted Parts	Stainless steel, including FKM
Range	Vacuum to 10,000 psi
Accuracy	+/-2% of the adjustable set-point range



10WPS Differential Explosion Proof Pressure Switch

Explosion proof, watertight differential pressure switch with high-current ratings and fixed deadband. IP68 rated.

Housing Material	Die-cast aluminum
Wetted Parts	316 Stainless steel welded, including titanium material
Range	15" H ₂ O to 500 psi differential
Accuracy	+/-1% of the adjustable set-point range



DPG Digital Pressure Gauge

Ideal for commercial and industrial applications in both test measurement and general purpose installations

Dial	2.5" (63mm)
Range	Vac-0-15,000 psi
Socket & Diaphragm	316 SS, welded
Connection	1/4" NPT
LCD Display	2" x 3/4" (48mm x 16mm)



LE1 OEM Transmitter

Suitable for a variety of applications including pump and compressor monitoring, refrigeration and HVAC

Output Signal	Standard 2-wire: 4-20 mA / Vs = 12-30 Vdc Optional 3-wire: 0.5-4.5 Vdc / Vs = 10-30 Vdc
Range	Vac to 8,700 psi
Accuracy	±0.5% FSO (±1% FSO for pressures ≤45 psi (3 x bar))
Wetted Parts	304 SS port with Ceramic sensor
Allowable Temperatures	Operating: -40°F to 212°F (-40°C to 100°C) Compensating: 14°F to 176°F (-10°C to 80°C)



LE3 General Purpose Transmitter

Suitable for all process and automation control, hydraulics and pneumatic sensing, pump and compressor monitoring, refrigeration and HVAC

Output Signal	Standard 2-wire: 4-20 mA / Vs = 8-32 Vdc (CSA) Optional 3-wire: 0-10 V / Vs = 14-30 Vdc Optional 3-wire ratiometric: Vsig = 0.5-4.5 Vs / Vs = 5 ± 0.5 Vdc
Range	Vac to 5,000 psi
Accuracy	±0.5% FSO
Wetted Parts	304 SS port with Ceramic sensor
Allowable Temperatures	Medium: -13°F to 257°F (-25°C to 125°C) Storage: -40°F to 185°F (-40°C to 85°C) Electronics environment: -13°F to 185°F (-25°C to 85°C)



LLP Low Pressure Transmitter

Developed for low pressure applications in general industry and OEM applications

Output Signal	Standard 2-wire: 4-20 mA / Vs = 8-32 Vdc Optional 3-wire: 0-10 V / Vs = 14-30 Vdc Optional 3-wire ratiometric: Vsig = 0.5-4.5 V / Vs = 5 ± 0.5 Vdc
Range	1.5 psi to 25 psi
Accuracy	±0.5% FSO
Wetted Parts	304 SS port with Ceramic sensor
Allowable Temperatures	Medium: -13°F to 185°F (-25°C to 85°C) Storage: -40°F to 185°F (-40°C to 85°C) Electronics environment: -13°F to 185°F (-25°C to 85°C)



LMH Hydraulic Transmitter

Suitable for heavy duty process and automation control including mobile hydraulics and presses

Output Signal	Standard 2-wire: 4-20 mA / Vs = 8-32 Vdc Optional 3-wire: 0-10 V / Vs = 14-30 Vdc Optional 3-wire ratiometric: Vsig = 0.5-4.5 Vs / Vs = 5 ± 0.5 Vdc
Range	100 psi to 8,700 psi
Accuracy	±0.5% FSO
Wetted Parts	304 SS port with SS welded sensor
Allowable Temperatures	Medium: -40°F to 257°F (-40°C to 125°C) Electronics environment: -40°F to 185°F (-40°C to 85°C) Storage: -40°F to 185°F (-40°C to 85°C)



LIS Intrinsically Safe Transmitter

Appropriate for all hazardous areas where an intrinsically safe rating is required, including oil & gas and chemical installations

Output Signal	Standard 2-wire: 4-20 mA / Vs = 8-32 Vdc I.S. protection: Vs = 14-28 Vdc Optional 3-wire: 0-20 mA / Vs = 14-30 Vdc 0-10 V / Vs = 14-30 Vdc
Range	Vac to 8,700 psi
Accuracy	±0.5% FSO IEC 60770
Wetted Parts	304 SS port with Ceramic sensor
Allowable Temperatures	Medium: -40°F to 257°F (-40°C to 125°C) Electronics environment: -13°F to 185°F (-25°C to 85°C) Storage: -40°F to 212°F (-40°C to 100°C)



LXP Explosion Proof Transmitter

Suitable for a variety of hazardous applications where the added security of an explosion proof enclosure is required

Output Signal	Standard 2-wire: 4-20 mA / Vs = 12-28 Vdc Optional 3-wire: 0.5-5.5 Vdc / Vs = 9-28 Vdc 3-wire: 1-11 Vdc / Vs = 14-28 Vdc Note: Other output signals available
Range	Vac to 15,000 psi
Accuracy	±0.20% BFSI / ±0.5% for vacuum only
Wetted Parts	304 SS port with welded sensor
Allowable Temperatures	Operating: -40°F to 160°F (-40°C to 71°C) Compensating: 30°F to 160°F (-1°C to 71°C) Storage: -40°F to 185°F (-40°C to 85°C)



LM1 Anti-Clogging Submersible Transmitter

Manufactured for level measurement in sludge and slurry installations including lifting stations

Output Signal	Standard 2-wire: 4-20 mA / Vs = 10-36 Vdc Optional 3-wire: 0-5 V / Vs = 10-36 Vdc 3-wire: 0-10 V / Vs = 10-36 Vdc
Range	2 psi to 50 psi
Accuracy	Standard: ±0.25% FSO Optional: ±0.5% FSO
Sensor	316L and welded
Allowable Temperatures	Operating: -40°F to 185°F (-40°C to 85°C)



LM6 All Stainless Steel Submersible Transmitter

Typical installations include ground or tank level monitoring of water and sewage treatment measurement

Output Signal	Standard 2-wire: 4-20 mA / Vs = 8-32 Vdc Optional 3-wire: 0-20 mA / Vs = 14-30 Vdc 0-10 V / Vs = 14-30 Vdc
Range	50' H ₂ O to 300 psi
Accuracy	±0.35% FSO
Sensor	316L
Allowable Temperatures	Medium: 14°F to 158°F (-10°C to 70°C) Storage: -13°F to 158°F (-25°C to 70°C)



LST 3A Sanitary Transmitter

The LST is a 316-grade welded stainless steel, NEMA 4X rated transmitter. This 3A approved transmitter is ideal for food processing and pharmaceutical applications where sanitary conditions are a high priority.

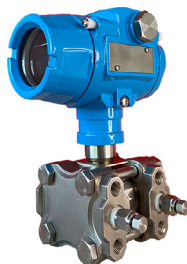
Output	4-20mA, 2-wire
Housing	316 SS
Accuracy	±0.25% ANSI/ASME Grade 3A
Range	0 to 1,000 psi
Wetted Parts	316L SS



WinSMART™ LY16 Pressure Transmitter

LY16 is a high-powered smart transmitter with hazardous approvals and broad accuracy classes, able to handle all pressure measurement requirements

Output	4/20mA, 1/5VDC, Modbus RS485, HART™
Housing	Die-cast aluminum, painted blue
Accuracy	0.2%, 0.5%, 0.1%, 0.075%, 0.05%
Range	-14.5 psi up to 14,500 psi
Sensor	316 SS



WinSMART™ LY36 Differential Pressure Transmitter

LY36 smart differential pressure transmitter can handle low and high pressure requirements and is equipped with hazardous approvals. Differential pressure transmitters measure pressure drops across orifices and can also monitor flow and level

Output	4/20mA, 1/5VDC, Modbus RS485, HART™
Housing	Die-cast aluminum, painted blue
Accuracy	0.05%, 0.075%
Range	-24"H ₂ O up to 1,450 psi
Sensor	316 SS



WinSMART™ TY52 Temperature Transmitter

Equipped with a PT100 RTD, TY52 can handle many different smart temperature reading applications from hazardous to general purpose areas

Output	4/20mA, 1/5VDC, Modbus RS485, HART™
Housing	Die-cast aluminum, painted blue
Accuracy	0.5%
Range	-50 up to 400°C / -58 up to 752°F
Stem	316 SS



TER Industrial RTD

RTDs highly accuracy and dependable temperature sensors used in a variety of industrial applications. Areas include refineries, petrochemical plants and gas-to-liquid processes

Head	Aluminum (standard) or stainless steel
Element	TER: Platinum 100 Ohm Class A as per IEC751
Accuracy	TER: ±0.5°C at 0°C
Range	-328°F to 2,192°F (-200°C to 1,200°C)
Connection	Process: 1/2" NPT (3/4" NPT with well) male, Conduit: 1/2" NPT female



TET Industrial Thermocouple

Thermocouples are electronic temperature sensors capable of measuring high temperatures. Areas include storage tanks, power plants, paper mills and food & beverage processes

Head	Aluminum (standard) or stainless steel
Element	TET: Type J & K standard
Accuracy	TET: ±0.4% Class 1
Range	-328°F to 2,192°F (-200°C to 1,200°C)
Connection	Process: 1/2" NPT (3/4" NPT with well) male, Conduit: 1/2" NPT female



NVA Needle Valve (Straight Body, Hard Seat)

The one-piece body construction provides strength and safety while the slow opening handle prevents sudden pressure surge. The hard seat provides durability against high flow/velocity and corrosive media

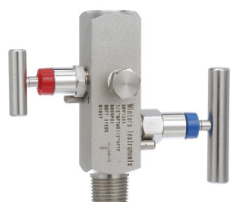
Body	Carbon steel, carbon steel NACE tip, stainless steel or stainless steel NACE
Connections	1/4", 3/8", 1/2", 3/4" or 1" NPTM x NPTF or NPTF x NPTF
Pressure	6,000 psi (41,368 kPa) or 10,000 psi (68,947 kPa)
Needle/Needle Tip	Stainless steel or stainless steel NACE
Gland Packing	PTFE/Graphite (Graphite used for high temperature applications)
Screw	304 SS



BBV Block & Bleed Valve Single Handle

The block & bleed design allows media to be bled off without disturbing the permanent piping installation, allowing safe and easy removal or replacement of instruments

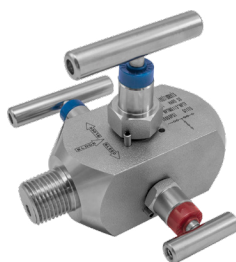
Body	Carbon steel or stainless steel
Connections	1/4" or 1/2" NPTM x NPTF or NPTF x NPTF
Pressure	6,000 psi (41,368 kPa) (soft seat) or 10,000 psi (68,947 kPa) (hard seat)
Needle/Needle Tip	Stainless steel
Stem O-ring	FKM
Approvals	CRN registered, burst pressure safety tested at 4 times valve rating



BBV Block & Bleed Valve Two Handles

The two handle block & bleed valve allows controlled media bleed off without disturbing the permanent piping installation, allowing safe and easy removal or replacement of instruments

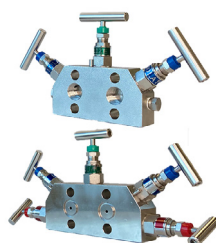
Body	Carbon steel, stainless steel or stainless steel NACE
Connections	1/4", 1/2" or 3/4" NPTM x NPTF or NPTF x NPTF
Pressure	6,000 psi (41,368 kPa) (soft seat) or 10,000 psi (68,947 kPa) (hard seat)
Needle/Needle Tip	Stainless steel or stainless steel NACE
Stem O-rings	FKM



BBV Double Block & Bleed Valve

The double block & bleed valve offers redundant closure for critical applications and controlled media bleed off, enabling instruments to be removed without disturbing the permanent piping installation

Body	Stainless steel or stainless steel NACE
Connections	1/4", 1/2" or 3/4" NPTM x NPTF or NPTF x NPTF
Pressure	10,000 psi (68,947 kPa)
Needle/Needle Tip	Stainless steel or stainless steel NACE
Stem O-rings	FKM



MVA 3 & 5 Handle Manifold

Manifold valves are designed to be perfectly installed with Winters LY36 Series differential transmitter and are critical in process and industrial environments for the enabling of shut-downs for the testing, repair and upgrading of instruments

Body	Stainless Steel
Connections	1/2" NPTF x 1/2" NPTF
Pressure	6,000 psi (41,368 kPa) (hard seat)
Needle / Needle Tip	Stainless Steel
Stem O-rings	PTFE/Graphite (Graphite is used for high temperature applications)



D70 Diaphragm Seal

The D70 is found in applications where process fluids are corrosive or viscous and could damage instrumentation. An optional flushing connection is available to prevent clogging of the seal

Housing	316L SS, Monel™, Hastelloy™ C
Diaphragm	316L SS, Monel™, Hastelloy™ C, FKM
Min. Pressure	30 psi
Max. Pressure	2,500 psi
Connection	1/4", 1/2", 3/4" and 1" NPT bottom, 1/4" and 1/2" top



D81 Isolation Ring

D81 is an in-line diaphragm seal that is available in a variety of configurations to fit specific applications. The wafer style isolation ring makes the D81 ideal for measuring the pressure of viscous or solid media

Housing	Carbon Steel, 316 SS, Acetal, others available
Diaphragm	EPDM, Neoprene, Nitrile or Hypalon™
Min. Pressure	Vacuum
Max. Pressure	1,000 psi
Connection	1/4" and 1/2" NPTF gauge ports, 1"-42" pipe sizes



TBR Bi-Metal Threaded Thermowell

The TBR is standard in a "stepped construction" and available in a variety of custom configurations. Use to protect TBM thermometers from media or to allow for maintenance without shutting down a system

Material	Brass*, AISI 304 SS, AISI 316 SS, other materials available upon request
Bore	.260" standard
Length	2.5", 4", 6", 9", 12" or 15"
Process Connect.	3/4", 1/2" or 1" standard, other thread sizes available upon request
Therm. Connect.	1/2" NPT female, other thread sizes available upon request



TWF Flanged Bi-Metal Thermowell

The TWF thermowell is designed for use on a closed system. It is used to protect thermometers from process media and to allow for thermometer replacement without requiring shut-down of the system

Material	304 SS or 316 SS
Bore	.260"
Length	4", 6", 9", 12" or 15"
Process Connect.	1", 1.5" or 2" flange
Therm. Connect.	1/2" NPT female




TSN Sanitary Thermowell

Installing a TSN allows for easy installation and replacement of bi-metallic thermometers without draining the process. It is 3A approved and specifically designed for the sanitary industry

Material	316 SS
Bore	.260" standard
Length	2.5", 4", 6" or 9"
Process Connect.	1.5" or 2" Tri-Clamp™
Therm. Connect.	1/2" NPT female



*  **WARNING:** This product can expose you to chemicals including lead, which is known to the State of California to cause cancer and birth defects or other reproductive harm. For more information go to www.P65Warnings.ca.gov.

WINTERS INSTRUMENTS

MANUFACTURER OF INDUSTRIAL INSTRUMENTATION



Winters Instruments is a global manufacturer of premium quality pressure and temperature instrumentation, with distribution partners in over 90 countries. Please contact us for your nearest Regional Manager.

Corporate - Canada

Winters Instruments
121 Rainside Road
Toronto, Ontario
M3A 1B2
Tel: 416-444-2345
1-800-WINTERS
Fax: 416-444-8979
sales@winters.com

Canada - Calgary

Winters Instruments
2410D 2nd Avenue SE
Calgary, Alberta
T2E 6J9
Tel: 403-723-6645
1-800-WINTERS
Fax: 403-723-6647
calgary@winters.com

USA - Houston

Winters Instruments
5400 W. Sam Houston Pkwy N.
Houston, Texas
77041
Tel: 281-880-8607
1-800-WINTERS
Fax: 281-880-8614
usasales@winters.com

Europe - Middle East - Africa

Winters Instruments
Dubai Airport Free Zone
6WB G50
Dubai, United Arab Emirates
Tel: 971-4295-9177
Fax: 971-4295-9177
emeasales@winters.com

Asia - Shanghai

Winters Instruments
Room 203, Building 8,
No. 471, Guiping Road
Shanghai
200233
China
Tel: 86-21-6104-2610
Fax: 86-21-6104-2615
asiasales@winters.com
www.wintersasia.com

Central America - Panama

Winters Instruments
Comercial Coco Solito
Manzana CO 3-2
Locales C-7, C-8, C-9
Zona Libre de Colon, Rep. de
Panama
Tel: +507 446-1800
www.winters.com

United Kingdom - Northampton

Winters Instruments
Unit, 4B Kingsfield Cl,
Northampton,
NN5 7QS
Tel: +44 7342 250093
emeasales@winters.com
www.winters.com

Latin America

Winters Instruments
Lamadrid 121
Los Troncos del Talar,
B1608CEC
Buenos Aires, Argentina
Tel: 54-11-4715-3036
latinsales@winters.com
www.winters.com.ar



Approved With:

Download Winters' literature at www.winters.com

Winters Instruments is ISO 9001:2015 Registered

12/22
MKT796